



FEATURES

- Door is easily removed and can be installed to open in any direction with our innovative spring hinge system
- AP installs using the included ceiling tile grid clip shipped with the AP onto an integrated mounting plate with no tools
- Key lock for security
- Includes integrated tabs for securing enclosure mount to permanent building structure
- Shallow back box (1.5") allows installation into the tightest ceiling clearances



BENEFITS

- Easy to Install
- No ceiling tile grid modification necessary (if mounting into a 2'x2' grid)
- Service the AP without removing the enclosure mount from ceiling
- Lightweight aluminum design reduces ceiling strain and load
- Simple, one person installation
- Blends seamlessly into ceiling
- No tools required for installation

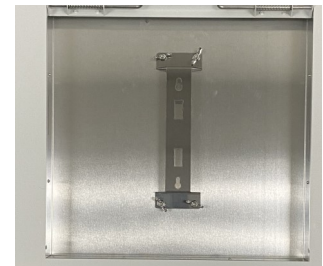


MOUNT SHIPS WITH

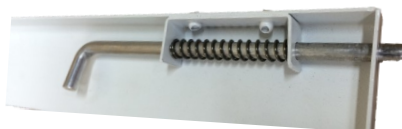
- 2x2 Suspended Ceiling Tile Enclosure Mount
- Cord Grip
- Key



Integrated mounting tabs on two sides



Integrated Mounting Plate



Spring Hinge



Key Lock

ARUBA AP SUSPENDED CEILING TILE ENCLOSURE MOUNT (515 STYLE)

Part Number: ATS-CT-ARUBA3-2X2



MECHANICAL SPECIFICATIONS

Dimensions: 23.75" x 23.75" x 1.5" (603.25mm x 603.25mm x 38.1mm)
Weight (without AP): 3.75 lb (1.70 kg)
Material: Aluminum
Color: White
Lock: Key Lock
Installation: Suspended Ceiling (includes tabs for securing to building structure)



ENVIRONMENTAL SPECIFICATIONS

Installation Environment: Indoor

STANDARDS, TESTING AND CERTIFICATIONS

Designed to meet NEC300-22 and 300-23 to mount the Aruba APs in plenum/air handling areas

OSHDP

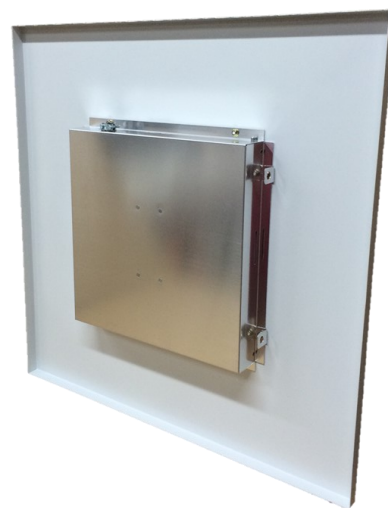


WARRANTY

2 Year Limited Warranty



Enclosure Front



Enclosure Back